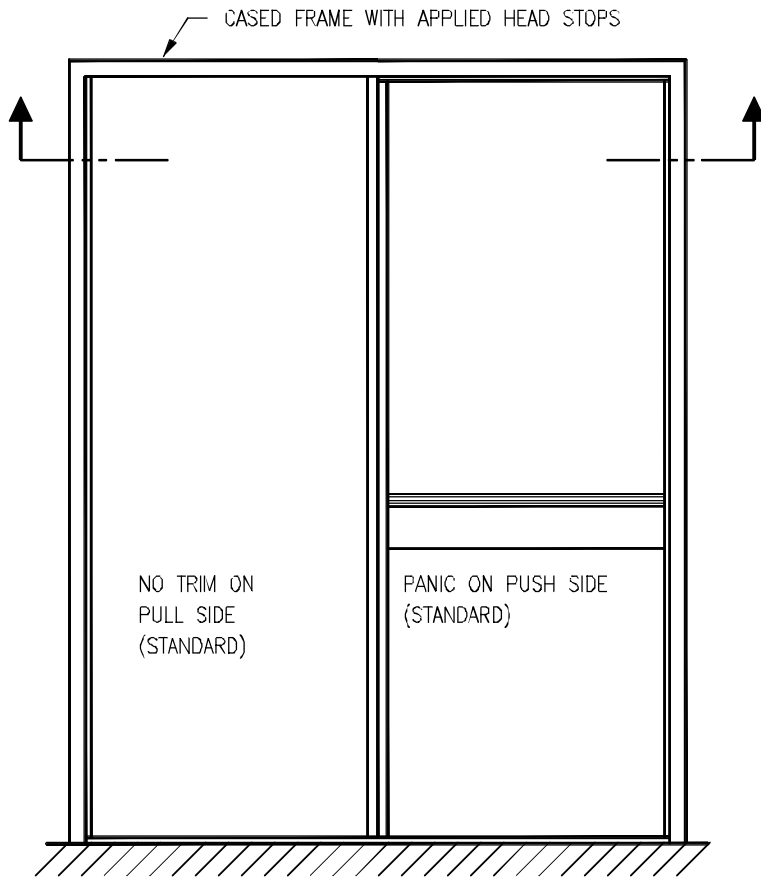


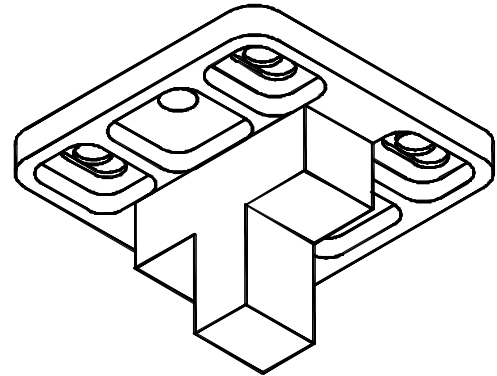
TECHNICAL DATA SHEET # 5

01

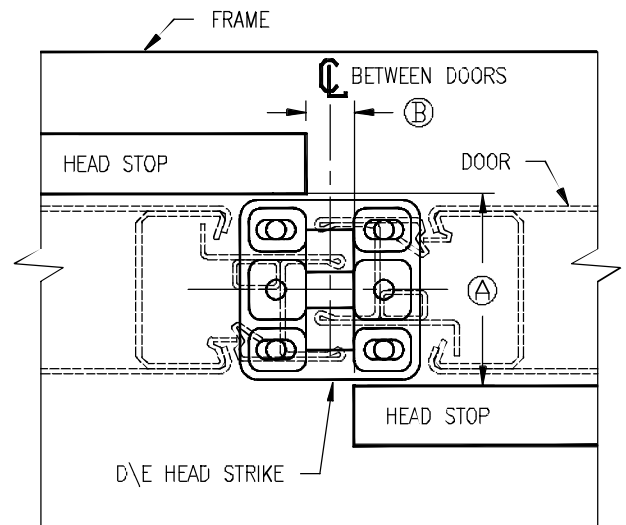
DOUBLE EGRESS PAIR DETAIL



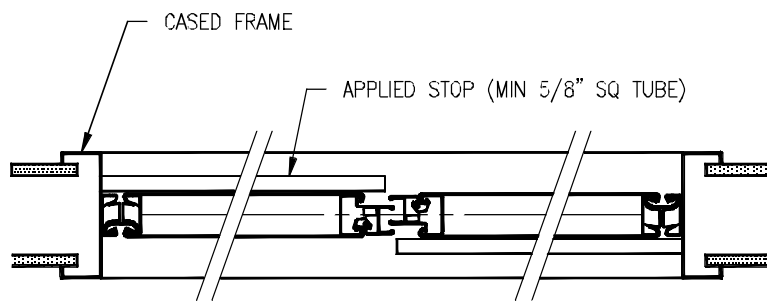
ELEVATION (RIGHT HAND TRAFFIC SHOWN)



L-47 HEAD STRIKE



DETAIL REFLECTED VIEW OF DOUBLE EGRESS HEAD STRIKE



REFLECTED PLAN VIEW

NOTE: IF DOORS WILL BE INSTALLED IN AN EXISTING TRIPLE STEP DOUBLE EGRESS FRAME, THIS MUST BE NOTED ON THE ORDER SO THAT SPECIAL MODIFICATIONS CAN BE MADE TO THE HEAD STRIKE AND LOCKING CHANNEL. REFER TO TECH DATA SHEET #70

DIMENSION Ⓑ MUST BE $1/2" \pm 1/32"$
 DIMENSION Ⓐ MUST BE 2" FOR PAINTED STEEL DOORS & 2 1/8" FOR DOORS WITH WOOD VENEER OR OTHER SURFACE APPLIED FINISHES



Total Door SYSTEMS™
 Global Leader in Integrated Access Technology™

TEL. (800) 852-6660

www.totaldoor.com

© Total Door 2018

FILE NAME

TDS5-01

DATE 11/29/18