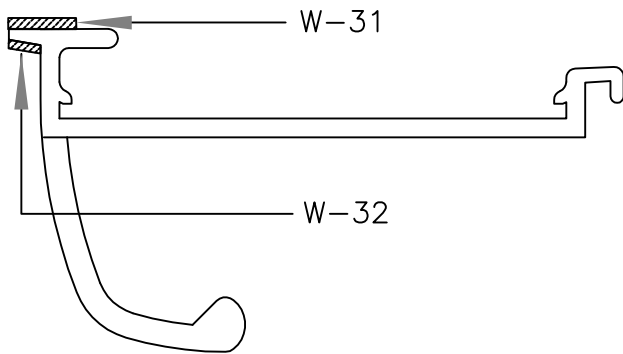
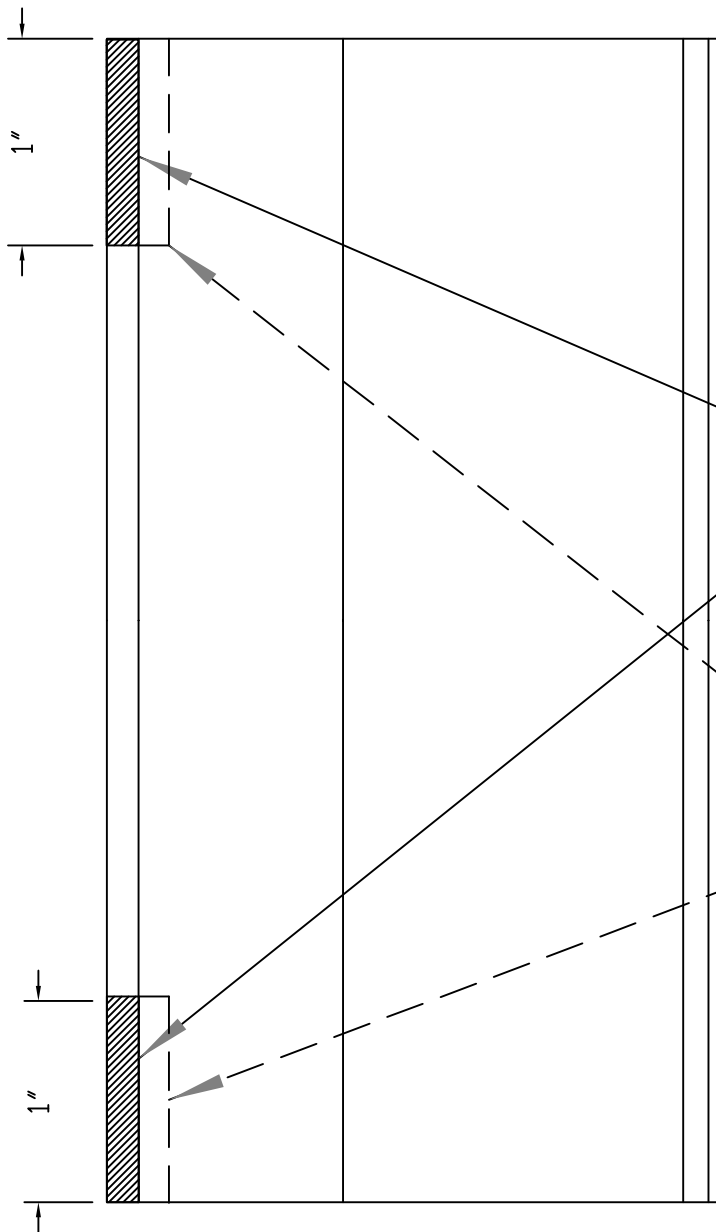


# TECHNICAL DATA SHEET #81

## GRIP MODIFIED FOR SOUND PACKAGE



TOP VIEW GRIP M-33



FACE VIEW GRIP M-33

W-32 B (2 EACH)  
1/16" X 1/8" X 1"

W-31B (2 EACH)  
1/16" X 1/4" X 1"  
ON BACK SIDE OF GRIP



**Total Door** SYSTEMS  
Global Leader in Integrated Access Technology™

TEL. (800) 852-6660  
www.totaldoor.com  
© Total Door 2013

OK
FILE; TDS 81-A
TDS
8/29/13