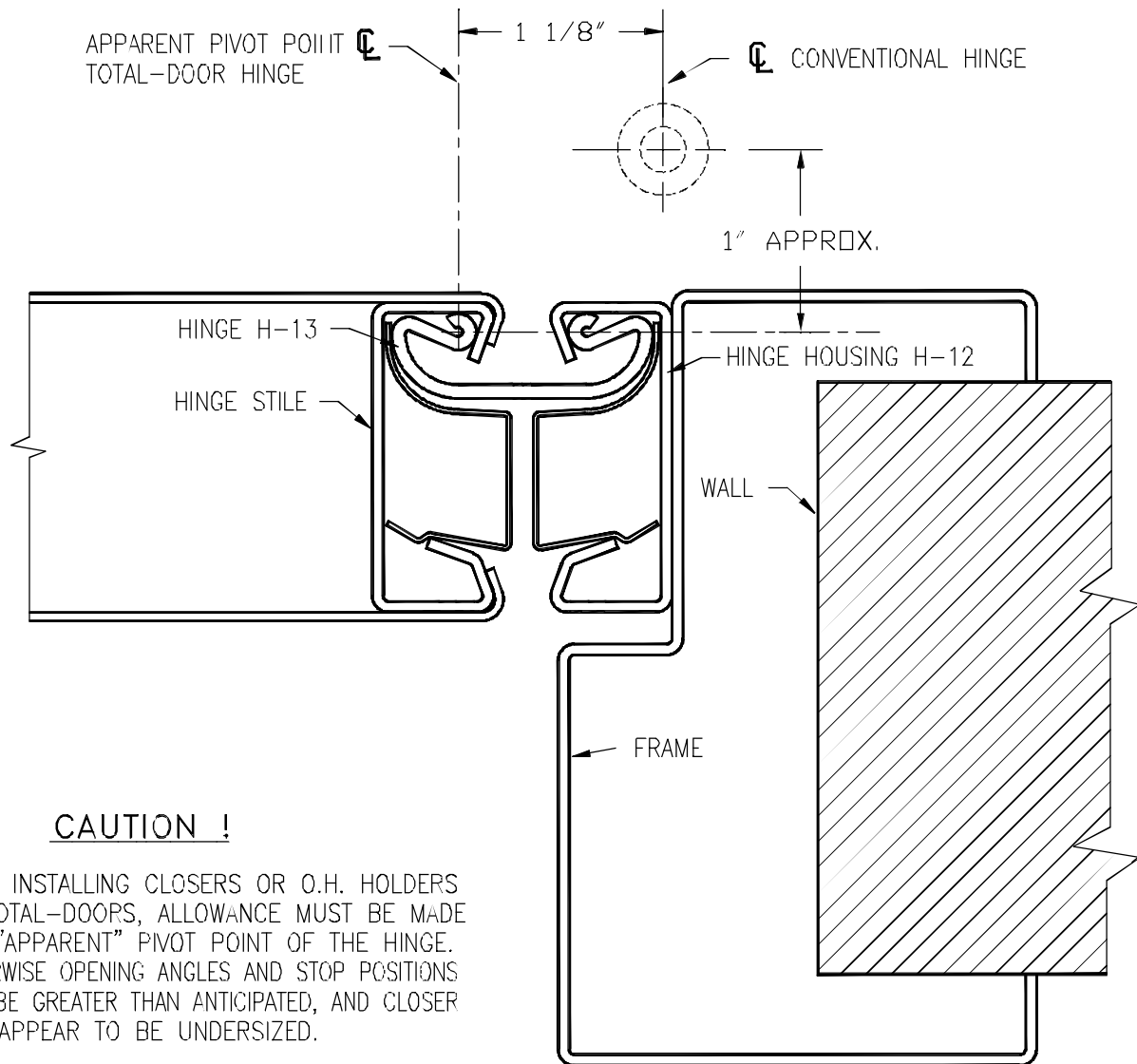


# TECHNICAL DATA SHEET # 29

01

## APPARENT PIVOT POINT OF TOTAL-DOOR® HINGE



### CAUTION !

WHEN INSTALLING CLOSERS OR O.H. HOLDERS ON TOTAL-DOORS, ALLOWANCE MUST BE MADE FOR "APPARENT" PIVOT POINT OF THE HINGE. OTHERWISE OPENING ANGLES AND STOP POSITIONS WILL BE GREATER THAN ANTICIPATED, AND CLOSER WILL APPEAR TO BE UNDERSIZED.



**Total Door** SYSTEMS™  
Global Leader in Integrated Access Technology™

TEL. (800) 852-6660

[www.totaldoor.com](http://www.totaldoor.com)

© Total Door 2013

FILE NAME

TDS29-01

DATE 8/30/13