

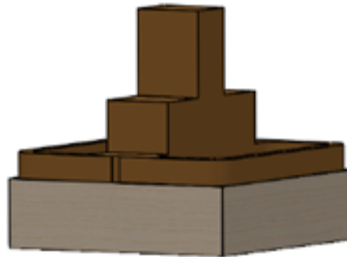


ATTENTION: All Total Door Distributors/Sales Reps

DATE: April 24, 2019

REGARDING: Double Egress Head Strikes

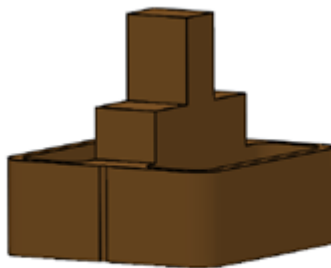
Job Site Issue: Improper offsets between head stops on triple step frame headers for Double Egress Application resulting in the Installer being unable to complete installation until replacement parts are ordered and received, slowing installation down.



L47

Old solution: Order spacer block for head strike and locking channels with ½” cut back.

New Solution: New L47MOD shipped on all Double Egress orders. Installers can complete installation regardless of offsets on the triple step frame headers.



L47MOD

New Head Strike: The new L47MOD is a single cast unit and includes a reveal at the centerline for a more efficient installation.