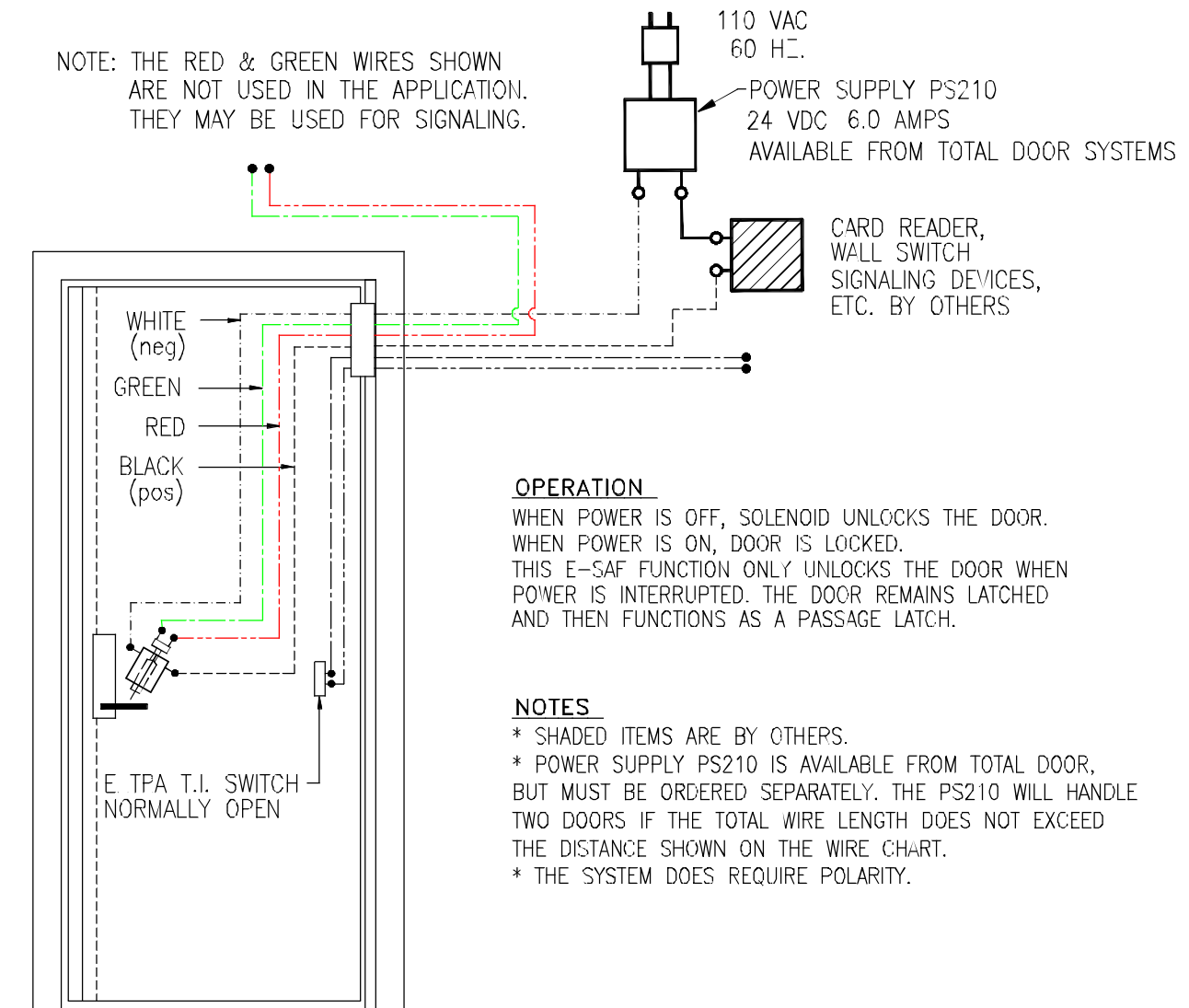


# TECHNICAL DATA SHEET # 19KA 00

## WIRING SCHEMATIC FOR E-SAF. WITH T.I. SWITCH

NOTE: THE RED & GREEN WIRES SHOWN ARE NOT USED IN THE APPLICATION. THEY MAY BE USED FOR SIGNALING.



### OPERATION

WHEN POWER IS OFF, SOLENOID UNLOCKS THE DOOR.  
WHEN POWER IS ON, DOOR IS LOCKED.  
THIS E-SAF FUNCTION ONLY UNLOCKS THE DOOR WHEN POWER IS INTERRUPTED. THE DOOR REMAINS LATCHED AND THEN FUNCTIONS AS A PASSAGE LATCH.

### NOTES

- \* SHADED ITEMS ARE BY OTHERS.
- \* POWER SUPPLY PS210 IS AVAILABLE FROM TOTAL DOOR, BUT MUST BE ORDERED SEPARATELY. THE PS210 WILL HANDLE TWO DOORS IF THE TOTAL WIRE LENGTH DOES NOT EXCEED THE DISTANCE SHOWN ON THE WIRE CHART.
- \* THE SYSTEM DOES REQUIRE POLARITY.

### RECOMMENDED MAX. LENGTH OF WIRE CONNECTING THE POWER SUPPLY TO THE DOOR

WIRE GAUGE	2 CONDUCTOR CABLE LENGTH	SINGLE CONDUCTOR WIRE LENGTH
20	20'	40'
18	30'	60'
16	50'	100'
14	80'	160'
12	125'	250'

### CAUTION

\* CHANGING THE WIRING FROM THAT SHOWN IN THE SCHEMATIC ABOVE, WILL VOID THE LIMITED WARRANTY.