

Certificate of Compliance



This is a certificate of conformity to certify that the bearer has successfully completed the requirements of the above scheme which include the testing of products, the initial assessment, and are subject to continuing annual assessments of their compliance and testing of samples of products taken from production (as applicable to the scheme) and has been registered within the scheme for the products detailed.

You have been awarded:

Intertek Warnock Hersey Mark for Steel Fire Doorset - Polystyrene or Mineral core

UL 10C (1998); UBC 7-2 (1997); CAN4 S104 (1985); UL 10C (2009); UL 1784 (2009); CAN/ULC S104 (2010); NFPA 252 (2012); UL 10C (2016); CAN/ULC S104 (2015); UL 1784 (2015); NFPA 252 (2017)

Certificate number: WHI17 – 20840502

Organization:

Total Door II, Inc.

6145 Delfield
Industrial Drive
Waterford, MI 48329

Product: Steel Fire Doorset – Polystyrene or Mineral core Rating: Up to 180 minutes for Fire Endurance & Hose stream Test Temperature Rise: Greater than 650 degrees F at 30 minutes for Polystyrene core, less than 250 degrees F at 30 minutes for Mineral core

TOTAL DOORS have been tested as per, Category D, which includes doors and frames that are labeled for positive pressure compliance as a complete assembly. A Category D assembly includes all of the following: doors, frames, and all hardware as noted within the product listing.

Construction:

Frame: All frame constructions shown in UL-63 are usable with Total Door. Total Doors may be used with all labeled frames of any manufacturer per the frame manufacturer's listings. Total Doors may be retrofitted to any existing labeled frames that are structurally sound.

Doors: Door bodies are 20 or 18 Gauge steel skins with continuous 16 gauge steel hinge and latch reinforcements. 5 ½" 18 gauge top and bottom rails. Cores are of polystyrene or mineral core.

3 hour - Steel doors, polystyrene core, with temperature rise over 650 degrees F. with:
a) 20 & 18 Gauge skins.
b) Single swing with maximum size of 4' 0" x 8' 0".
c) Pairs and double egress with maximum size of 8' 0" x 8' 0".
d) Levers, operating push/pull grips and panic devices, all without the use of Coordinators, flush bolts, astragals, vertical rods or floor strikes

3 hour - Steel doors, mineral core, with temperature rise less than 250 degrees F. with:
a) 18 Gauge skins.
b) Single swing with maximum size of 4' 0" x 8' 0".
c) Pairs and double egress with maximum size of 8' 0" x 8' 0".
d) Levers, operating push/pull grips and panic devices, all without the use of Coordinators, flush bolts, astragals, vertical rods or floor strikes.

www.intertek.com

Certificate of Compliance



This is a certificate of conformity to certify that the bearer has successfully completed the requirements of the above scheme which include the testing of products, the initial assessment, and are subject to continuing annual assessments of their compliance and testing of samples of products taken from production (as applicable to the scheme) and has been registered within the scheme for the products detailed.

1½ & ¾ hour - Steel doors, polystyrene core, with temperature rise over 650 degrees F. with;
 a) 20 Gauge skins maximum size single swing- 4' 2-3/16" x 9' 0"
 b) 20 Gauge skins maximum size pair & double egress swing- 8' 4-3/8" x 9' 0"
 c) 18 Gauge skins maximum size single swing- 4' 0" x 9' 0"
 d) 18 Gauge skins maximum size pair & double egress swing- 8' 0" x 9' 0"
 e) Levers, operating push/pull grips and panic devices, all without the use of Coordinators, flush bolts, astragals, vertical rods or floor strikes.

1½ hour - Steel doors, mineral core, with temperature rise less than 250 degrees F. with;
 a) 20 Gauge skins size single swing- >4' to the max. of 4' 2-3/16" x 9' 0"
 b) 20 Gauge skins size pair & double egress swing- >8' to the max of 8' 4-3/8" x 9' 0"
 c) 18 Gauge skins maximum size single swing- 4' 0" x 9' 0"
 d) 18 Gauge skins maximum size pair & double egress swing- 8' 0" x 9' 0"
 e) Levers, operating push/pull grips and panic devices, all without the use of Coordinators, flush bolts, astragals, vertical rods or floor strikes.

20 minute (with hose stream) - Steel doors, polystyrene core with;
 a) 20 Gauge skins maximum size single swing- 4' 2-3/16" x 9' 0"
 b) 20 Gauge skins maximum size pair & double egress swing- 8' 4-3/8" x 9' 0"
 c) 18 Gauge skins maximum size single swing- 4' 0" x 9' 0"
 d) 18 Gauge skins maximum size pair & double egress swing- 8' 0" x 9' 0"
 e) Levers, operating push/pull grips and panic devices, all without the use of Coordinators, flush bolts, astragals, vertical rods or floor strikes.

Door Hardware:

- Closers - Mortised closers are approved for all fire ratings including three (3) hour.
- Electric - Electric doors, with inclusion of a solenoid for remote control of locking/latching is approved on all labels as part of the door system. A separate label for the solenoid is not required when installed in the lower 40" of the door.
- Holders - Mortised semi-concealed electromagnetic holder mounted in the door for all labels.
- Lights - Glazing & Door light frames/kits shall be listed and labeled for use in the rated opening.

A steel channel of 16 or 18 gauge shall be installed between the two faces and shall be mechanically fastened in the corners. A strip of Pemko FG 3000S-90 shall be placed on both surfaces of glass between the glass and the light kit.

Groove for glazing depth:

Visible glazing area (sq. inch)	Minimum groove depth (inch)
0 - 300	1/2
301 - 400	9/16
401 - 500	5/8
501 - 600	11/16
601 - 1296	3/4

Cutouts shall not be less than 5-1/2 inches from door edges or other door cutouts. Cutout shall not cut reinforcements or stiffeners.

Visible glazing:

Rating (hour)	1/3, 3/4	1, 1-1/2, or Lead-Lined Doors
Maximum area:	1,296 sq. in.	100 sq. in.
Maximum height:	54	33
Maximum width:	30	10

Multiple panels are permitted in 1/3 and 3/4-hour doors when the sum of the areas does not exceed 1,296 square inches with above maximum height and width limitations for each panel.

Kick plates - Labeling shall not be required where the top of the protection plate is not more than 16 in. (406 mm) above the bottom of the door. Any height, when using Total Door standard bonded wrap around protection plates of Maximum 0.028 inch thick brass, bronze, steel, and aluminum without mechanical fasteners. Plates are to be attached to faces with contact adhesives.

Exit Devices - The exit device is an integral part of the door assembly and may be used with: Push/Pull Operating Grips, Lever Mechanisms, or Panic (Push Plate) Exit Devices. These devices meet the criteria found in UL 305 and can be independently labeled.

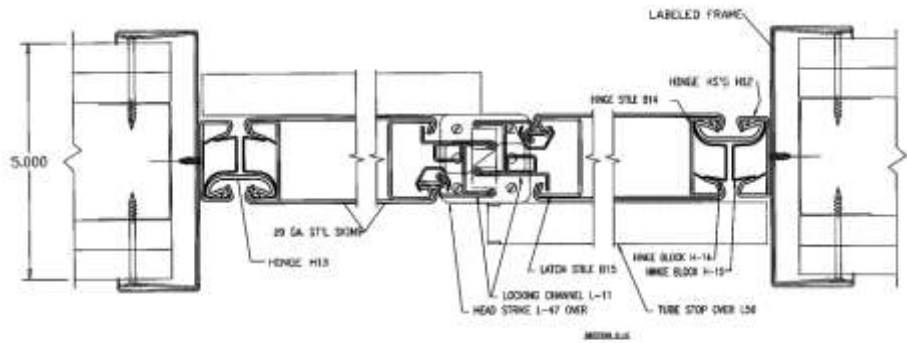
Certificate of Compliance



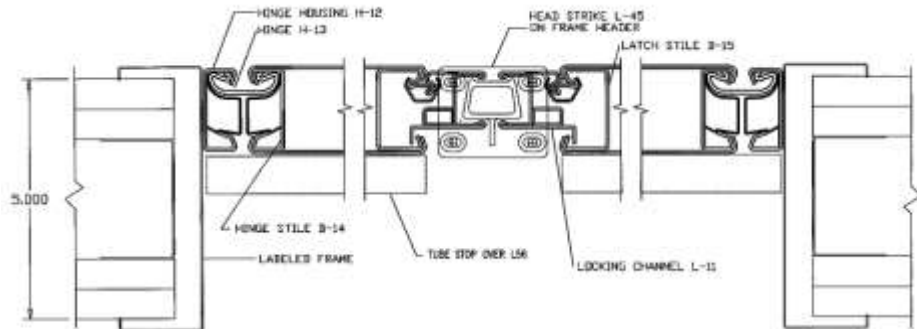
This is a certificate of conformity to certify that the bearer has successfully completed the requirements of the above scheme which include the testing of products, the initial assessment, and are subject to continuing annual assessments of their compliance and testing of samples of products taken from production (as applicable to the scheme) and has been registered within the scheme for the products detailed.

Smoke & Draft - Total door, doors meet the requirements of UBC Standard 7-2-1997 Part II without modification or special material. Thus the S mark may be applied to the label or half-tab label, for more details refer to Total Door Category D Door/Frame Assembly 20-180 Min Model Stl-180-Poly' Spec ID 25495.

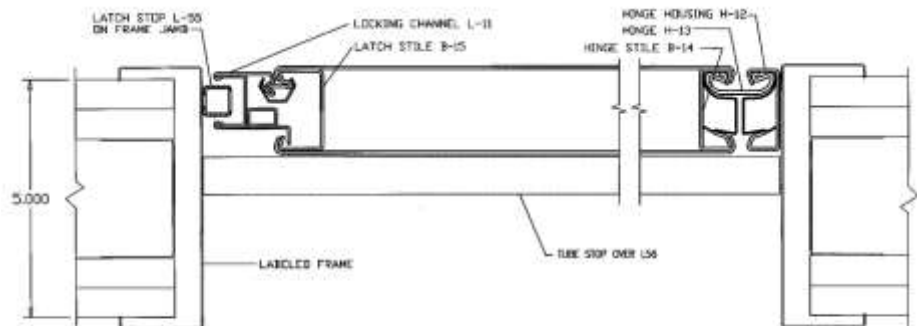
Special Finishes - All labeled steel doors including temperature rise may have Architectural film, genuine wood veneers(non-combustible material UL/ULC/WH approved claddings), stainless steel (except Type 302), aluminum or brass faces((1250 x 2450) with a maximum thickness of 1/16" (1.6mm)) on one or both sides but must be factory installed.



HORIZONTAL SECTION B-B



HORIZONTAL SECTION B-B



HORIZONTAL SECTION B-B

Certificate of Compliance



This is a certificate of conformity to certify that the bearer has successfully completed the requirements of the above scheme which include the testing of products, the initial assessment, and are subject to continuing annual assessments of their compliance and testing of samples of products taken from production (as applicable to the scheme) and has been registered within the scheme for the products detailed.



Check Listing report ref 25496 & Test reports ref. 3079311, 3149284MID-006 & 3190974MID-002 for full details.

Certification body: Intertek Testing Services NA, Inc.
Initial registration: September 1st, 2017
Date of expiry: August 31st, 2022
Issue status: 2

Dustin Behling
Certification Coordination Manager
Name

Dustin Behling
Signature

09/20/2017
Date

www.intertek.com

Registered address:
Intertek Testing Services NA, Inc. 545 E. Algonquin Rd. Arlington Heights, IL 60005 USA

The certificate and schedule are held in force by regular annual surveillance visits by Intertek Testing Services NA, Inc. and the reader or user should contact Intertek to validate its status. This certificate remains the property of Intertek Testing Services NA, Inc. and must be returned to them on demand. This Certificate is for the exclusive use of Intertek's Client and is provided pursuant to the Certification agreement between Intertek and its Client. Intertek's responsibility and liability are limited to the terms and conditions of the agreement. Intertek assumes no liability to any party, other than to the Client in accordance with the agreement, for any loss, expense or damage occasioned by the use of this certificate. Only the Client is authorized to permit copying or distribution of this certificate and then only in its entirety. Use of Intertek's Certification mark is restricted to the conditions laid out in the agreement. Any further use of the Intertek name for the sale or advertisement of the tested material, product or service must first be approved in writing by Intertek. Initial Factory Assessments and Follow up Services are for the purpose of assuring appropriate usage of the Certification mark in accordance with the agreement, they are not for the purposes of production quality control and do not relieve the Client of their obligations in this respect.