

INTRODUCING:



SafeFrame

Global Leader in Integrated Access Technology™

Total Door Systems

Total Door Systems SafeFrame provides a complete integrated smoke containment system that exceeds the testing and rating requirements for elevator, hoistway, and elevator lobby doors. Streamlined in design, the Total Door SafeFrame eliminates the need for frame construction and is perfectly matched to the elevator door to create a complete door and frame system.

No special wall construction or building of lobbies is needed - and the Total Door SafeFrame is shipped with the door so you get the complete system all in one delivery minimizing trips for installation and job site surveys.

Perfectly integrated functionality. Unmatched security and life protection. And infinite design possibilities. All in one easy system.



Total Door SYSTEMS™
Global Leader in Integrated Access Technology™

Find out more at TotalDoor.com or by calling 800.852.6660

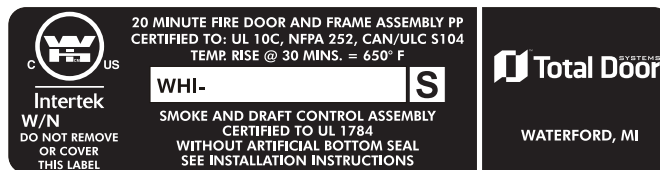
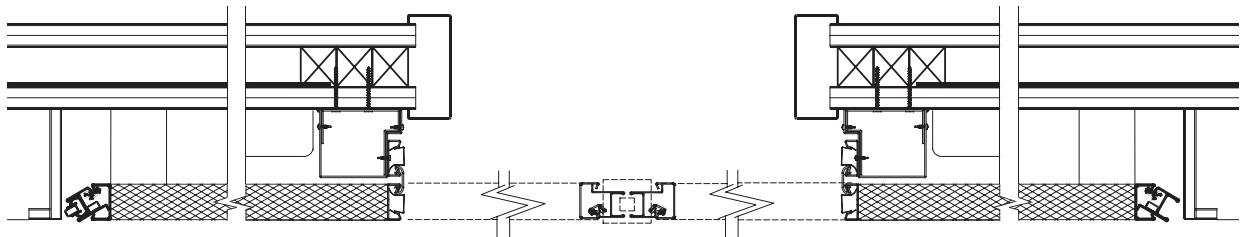
Smoke Containment Swing Door and **SafeFrame** System

Now, you get a complete door and frame system with:

- SafeFrame and integrated door all in one shipment
- Built-in concealed magnetic holder with armor loop directly tied into each floor's smoke detector
- Surface mounted knock down sub-buck frame to mount directly to shaft face
- Fire and smoke rated system
- Complete system tested to meet code UL1784 without an artificial bottom seal
- Meets ASME 17.1 elevator code requirements
- BHMA certified to A156.32
- Meets IBC requirements for air leakage of assemblies. Less than 3 cfm per s.f. of door at .10 inch (24.9 Pa) of water column pressure.

We offer single door and paired door applications.

Total Door has always offered custom design and manufacture of fully integrated door systems that stay true to your design vision and building needs. Now, with our new SafeFrame (patent pending), it is a truly integrated system, ready to be installed with no additional construction. Now, more than ever, we have your back.



Label allows for easy field verification of code compliance.
Ratings up to 90 minutes.



Total Door SYSTEMS™
Global Leader in Integrated Access Technology™

www.totaldoor.com / 800.852.6660