

1" MIN. CLEARANCE REQUIRED FROM CEILING  
OR TOP OF POCKET TO FRAME RABBET

12" 16 GA STEEL  
REINFORCEMENT OR  
WOOD BLOCKING IN  
WALL BY G.C. TO  
RUN FULL WIDTH OF  
POCKET AND TO TOP  
OF FRAME

EXIT DEVICE

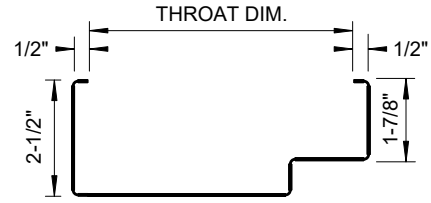
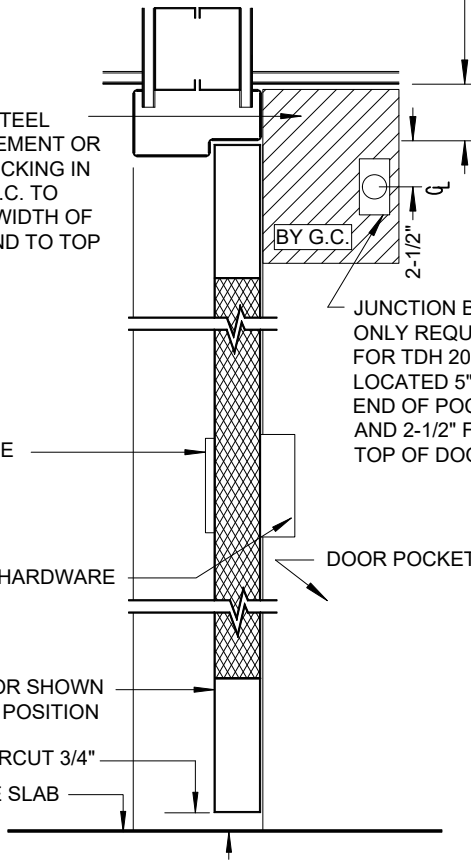
PULL SIDE HARDWARE

TOTAL DOOR SHOWN  
IN CLOSED POSITION

STD. UNDERCUT 3/4"

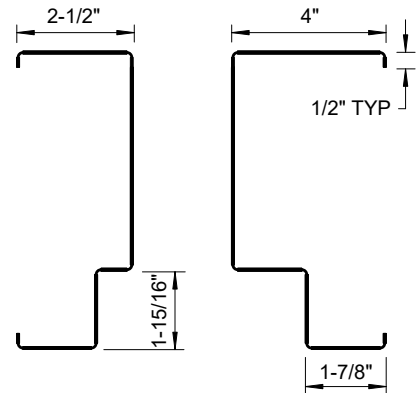
CONCRETE SLAB

JUNCTION BOX  
ONLY REQUIRED  
FOR TDH 200 MAG  
LOCATED 5" FROM  
END OF POCKET  
AND 2-1/2" FROM  
TOP OF DOOR



### HEAD PROFILE

NOT TO SCALE

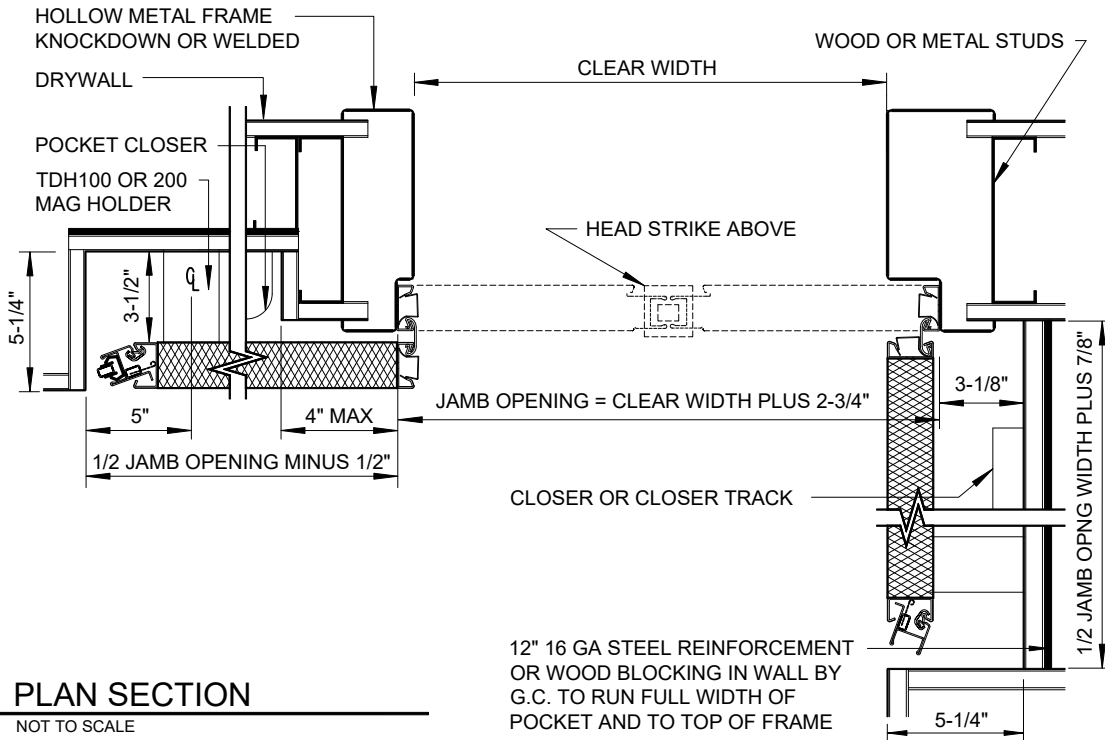


### JAMB PROFILE

NOT TO SCALE

## 1 VERTICAL SECTION

NOT TO SCALE



## 2 PLAN SECTION

NOT TO SCALE