

1" MIN. CLEARANCE REQUIRED FROM CEILING OR TOP OF POCKET TO FRAME RABBET

12" 16 GA STEEL REINFORCEMENT OR WOOD BLOCKING IN WALL BY G.C. TO RUN FULL WIDTH OF POCKET AND TO TOP OF FRAME

EXIT DEVICE

PULL SIDE HARDWARE

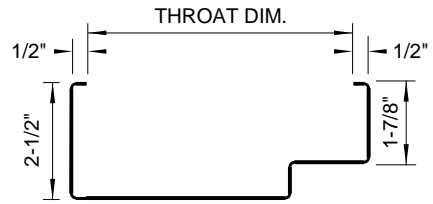
TOTAL DOOR SHOWN IN CLOSED POSITION

STD. UNDERCUT 3/4"

CONCRETE SLAB

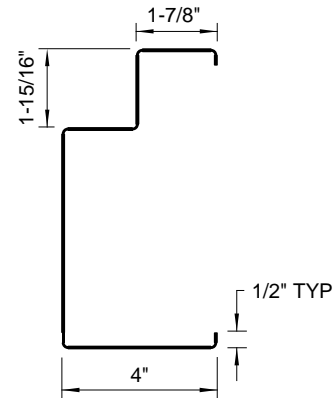
BY G.C.  
2-1/2"  
JUNCTION BOX ONLY REQUIRED FOR TDH 200 MAG LOCATED 5" FROM END OF POCKET AND 2-1/2" FROM TOP OF DOOR

DOOR POCKET



### HEAD PROFILE

NOT TO SCALE

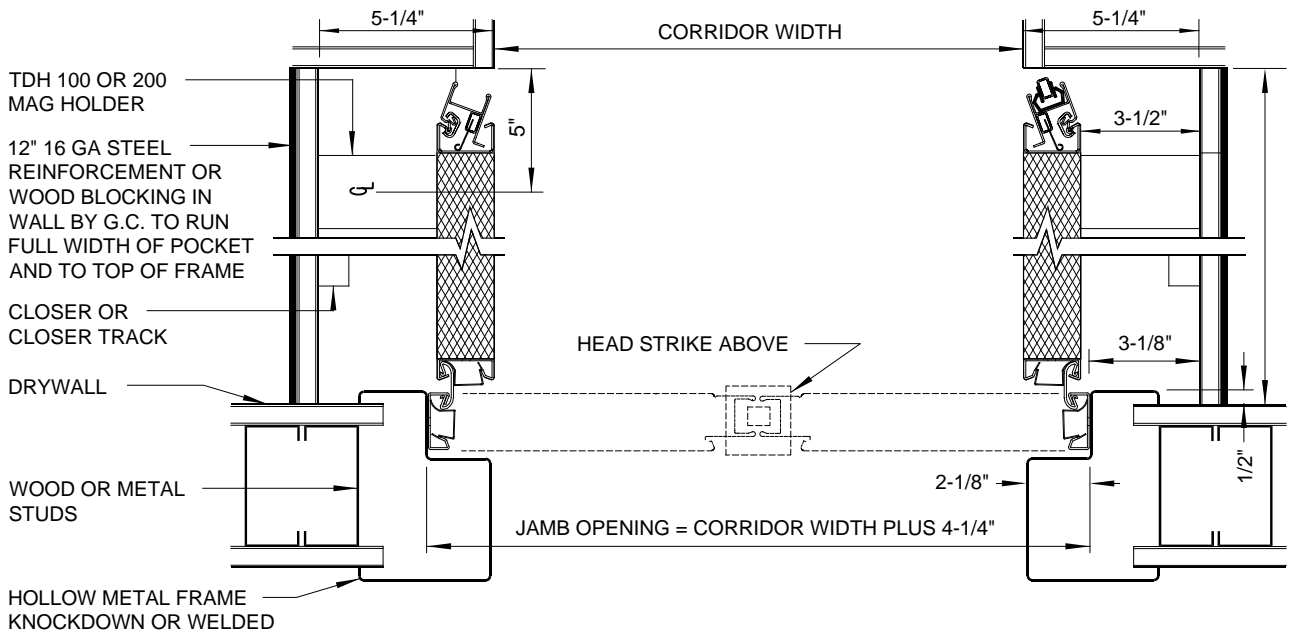


### JAMB PROFILE

NOT TO SCALE

## 1 VERTICAL SECTION

NOT TO SCALE



1/2 JAMB OPENING WIDTH PLUS 7/8"  
FOR UNEQUAL PAIR USE NOMINAL DOOR SIZE + 7/8"

## 2 PLAN SECTION

NOT TO SCALE