

The background image shows a modern building interior. On the left, a staircase with a metal railing and circular patterns is visible. The walls are made of perforated metal panels. A large green diagonal stripe runs across the image from the top left to the bottom right. The bottom left corner has a blue background with white and yellow text.

TOTAL DOOR SALES TRAINING

The logo consists of a stylized white square with a smaller square inside, creating a geometric shape.

Total Door SYSTEMS
Global Leader in Integrated Access Technology™



PERFORMANCE

ANSI/BHMA 156.32 Integrated Door Opening Assemblies

- First and only manufacturer to test to standard
- Tested as a complete system, not separate components

SUSTAINABILITY

First in Category to receive UL EPD

- EPD - Environmental Product Declaration
- Life Cycle Assessment
- HPD - Health Product Declaration



COMPLIANCE

UL 1784

Know Your Code:

UL 1784

Does Your Door System
Meet The Standard?

UL 1784 TESTING -

Standard for Air Leakage Tests of Door Assemblies and Other Opening Protectives

UL 1784 covers the testing of air leakage through door assemblies and other opening protectives installed in wall openings where air leakage is intended to be controlled.

Use of an Artificial Bottom Seal

During the UL 1784 test, tape is used across the bottom of the door to seal off the undercut. This allows the jambs and header to be tested for air leakage. The tape used across the bottom of the door is referred to as an "artificial bottom seal."

Code officials want to know that the doors have been tested without an artificial bottom seal to ensure that the door assembly will not exceed the 3 CFM per square foot of door opening at 0.10 inch of water for both the ambient temperature and the elevated temperature exposure test.

The door needs to be tested with all components during the test (components: panic hardware, locks, hinges, sweeps, closers, gasketing, etc.) You cannot add brush sweeps to a conventional door and call it a tested assembly to meet code requirements. Products for this application must show certification of proof that they have been tested without an artificial bottom.



At Total Door Systems, our expertise is included in our product.

Total Door Systems is the only integrated assembly that exceeds the testing and rating requirements for elevator, hoistway, and elevator lobby doors.

We combine perfectly integrated functionality, unmatched security and life protection, with infinite design possibility.

We have your back. We're the experts, so that you don't have to be.

 **Total Door** SYSTEMS™
Global Leader in Integrated Access Technology™

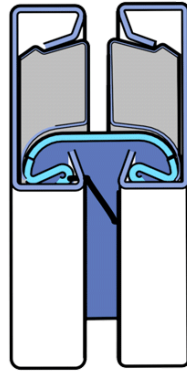


LEADING THE INDUSTRY

IN DESIGN AND BUILD OF
INTEGRATED DOOR SYSTEMS

PRODUCT OVERVIEW



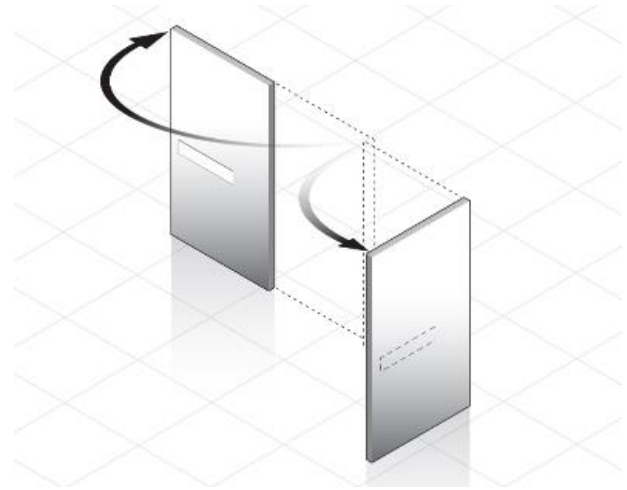
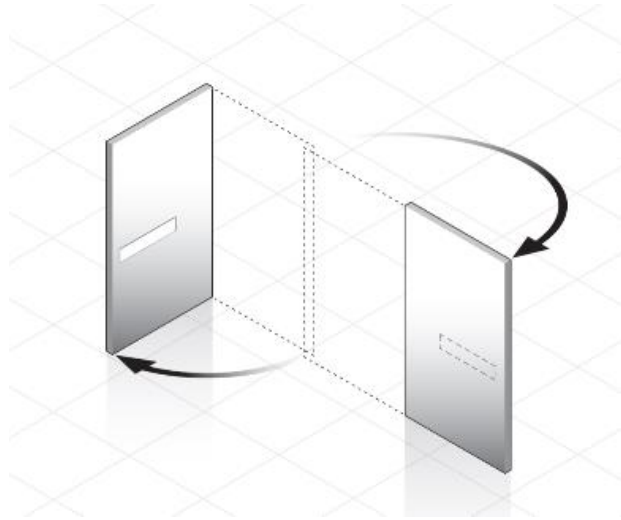


HINGE

- Full height, continuous
- Easy surface mounting
- NO templating required
- No weight on the hinge

DEGREE OF SWING

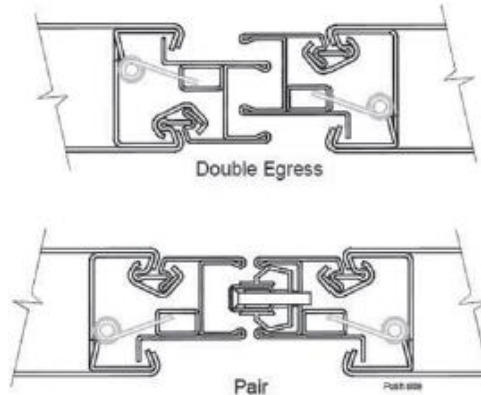
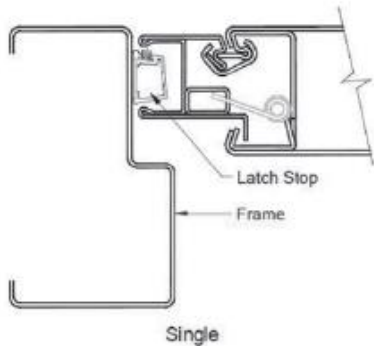
90° through 180°





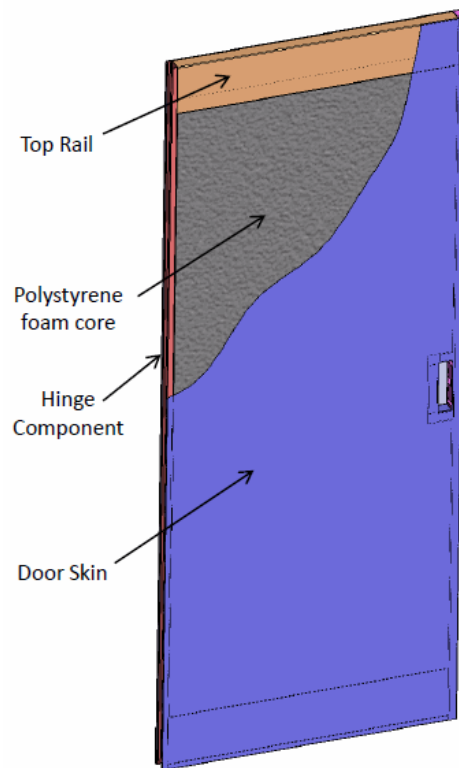
LOCKING CHANNEL

- Full height
- Exceptional security
- Eliminated vertical rods, floor hardware, coordinators, and flush bolts
- Reduce air leakage
- Less moving parts
- Allows for less flex in door body



DOOR BODY

- Steel skin - bonded to the door core, rails and stiles for stronger sheer strength; wraps around the stiles
- 5 ½" steel top and bottom rails - strengthen door, provide reinforcement for closers, allows for undercutting without jeopardizing fire label
- Insulating and sound deadening polystyrene cores
- ¾" standard undercut



MAXIMUM DOOR SIZES

Section 1 - Configurations / Functions:

Configurations: Fire Labels and Maximum Sizes

1.03

		Non Label	20 Min	B & C	A	T-Rise B	T-Rise A
20 GAUGE	Single	4' 2-3/16" x 10'	4' 2-3/16" x 10'	4' 2-3/16" x 9'	4' x 8'	>4' to 4' 2-3/16" x 9'	N/A
	PR & DE	8' 4-3/8" x 10'	8' 4-3/8" x 10'	8' 4-3/8" x 9'	8' x 8'	>8' to 8' 4-3/8" x 9'	N/A
18 GAUGE	Single	4' x 9'	4' x 9'	4' x 9'	4' x 8'	4' x 9'	4' x 8'
	PR & DE	8' x 9'	8' x 9'	8' x 9'	8' x 8'	8' x 9'	8' x 8'
16 GAUGE	Single	4' x 8'	4' x 8'	4' x 8'	4' x 8'	N/A	N/A
	PR & DE	8' x 8'	8' x 8'	8' x 8'	8' x 8'	N/A	N/A

Removable mullions are only available on non-label doors up to 10'

A Label = 3 Hours

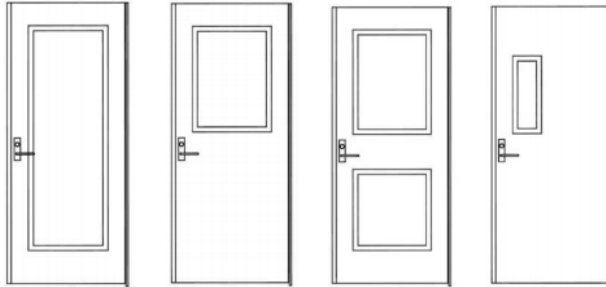
B Label = 1-1/2 Hour

C Label = 3/4 Hour

LITE KIT OPTIONS

2.06

Section 2 - Door System Options: Lite Kit Options

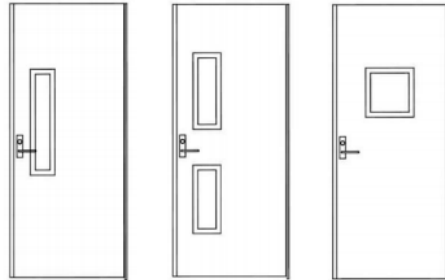


FG Lite

G Lite

GG Lite

N Lite



N1 Lite

NN Lite

V Lite

Note: Any lite size outside of the parameters in the above examples, will be considered M Lite, top & bottom.

Section 2 - Door System Options: Lite Kits/Glazing

2.05

All lite kits are made of 16 gauge cold rolled galvanized steel with T.I.G. welded mitered corners. Finish is baked-on poly. Lites are available for all glass thicknesses up to 1-1/8". Lite frames project only 1/16" beyond the door skin.

All lite kits may be glazed with fire rated ceramic glazing, tempered glass, non-rated laminated safety glass or impact rated wire glass.

Label	Max. in ² Visible Glass	Max. Number of Lites	Max. Visible Glass Widths	Max. Visible Glass Lengths
FIRELITE PLUS & NT				
A (3 hr)	100"	No Limit	12"	33"
B (1-1/2 hr)	2034"	No Limit	36"	56"
C (3/4 hr)	3204"	No Limit	36"	89"
20 Minute	3204"	No Limit	36"	89"

Note: Temperature Rise Labels: 100 in² maximum for all labels, 12" maximum visible width, 33" maximum visible height.

Lite kit cut out is 2" larger than visible glass size.
Door size may limit maximum visible height and width.

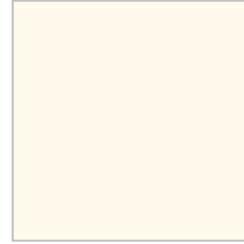


FINISHES PAINT

- Standard Colors
- Custom Colors Available



Pure White



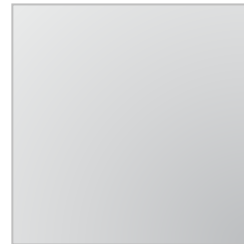
Sand White



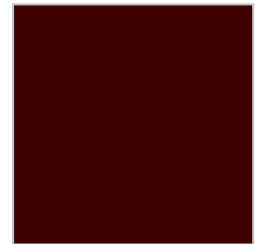
Black



Gray

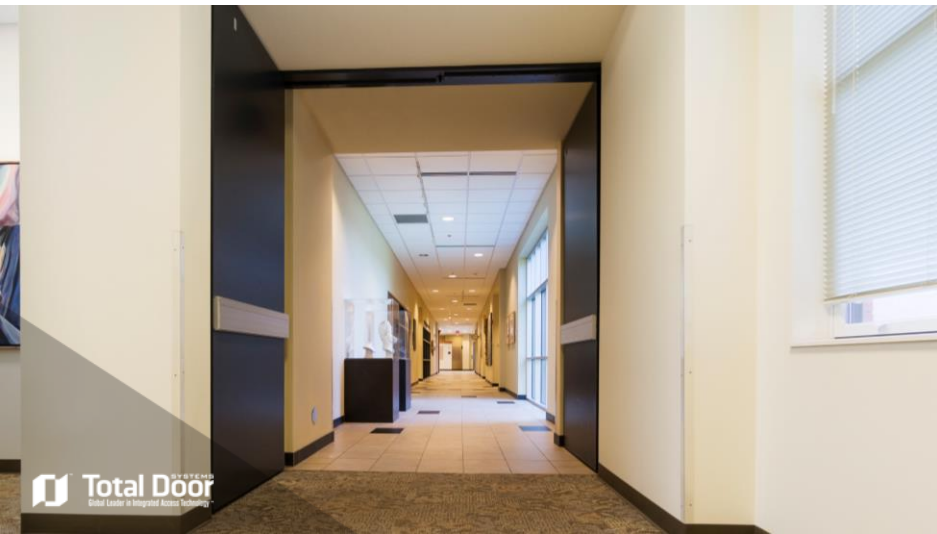


Silver*



(DB) Dark Bronze

* This swatch does not reflect the true metallic representation



FINISHES ARCHITECTURAL FILM



FINISHES

METAL CLADDING



FINISHES

WOOD VENEER



FINISHES 3-PLY VENEER

Customer Supplied 3-Ply Veneer by Others

3-Plywood Veneer is used for horizontal grain or complex finishes. Total Door is only able to provide single step stain finished in-house. All other highly customized veneer finishes must arrive prefinished on 3-Ply Veneer.

Specification

- 3-Ply Thickness: .100 Min .115 Max
- Veneer Face: 1/36" to 1/50" (1/42" Nominal)
- Cross Band: HDF or Natural Aspen .060" thick
- Backer: 1/36" to 1/50" (1/42" Nominal) No open knots and no splits
- Sheet Size: 2" wider and 2" taller than door size
(Add additional 8" for doors with standard P14 exit devices)

Procedures for supplying veneer by others:

Mark each sheet with the following information:

- Door Number
- "Top" or "Bottom"
- "Push" or "Pull" side of the door
- Mark and dimensions for special alignment

**All product to be palletized with complete plywood coverage to prohibit freight damage.
Include "Customer Supplied Veneer" packing slip provided by the factory.**

FINISHES

WALL COVERINGS

Wall Covering - Must be factory applied. No Exceptions!!

- Must meet ASTM E-84 requirements for Class A flame resistance
- Must be Type I or Type II Vinyl Wall covering with woven backer
- Wall covering will not be spliced or pieced on the door

All jobs with customer supplied wall covering, the following will be required:

- Must exceed the width of the door body being ordered by 2"
- For orders with 1-10 doors, provide extra material to cover 1 door, both sides
- For orders with greater than 10 doors, provide extra material to cover 2 doors, both sides

FINISH SAMPLES

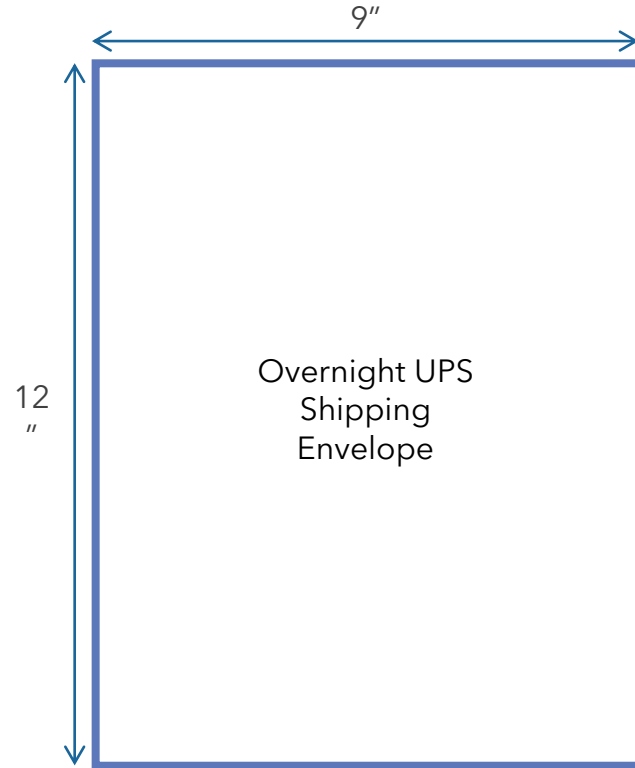
Attn: Orders

Quote Number, Job Name

Total Door

6145 Delfield Dr.

Waterford, MI 48329



FEASIBILITY ANALYSIS FOR UNUSUAL FINISHES

- 2 weeks minimum for feasibility testing
- Typical feasibility analysis includes:
 - Bending, cutting, sanding, edging

For example: Acrovyn (see picture)



380 Shaker Cherry

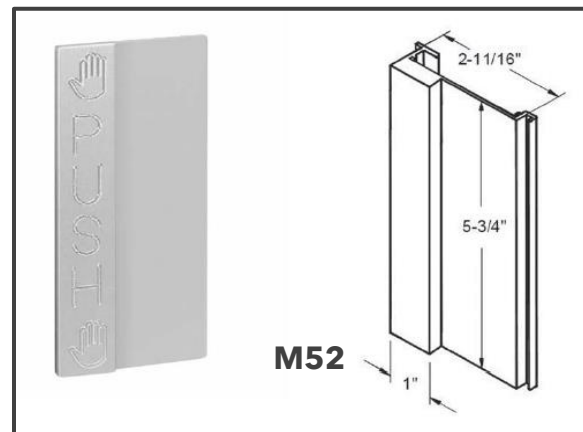
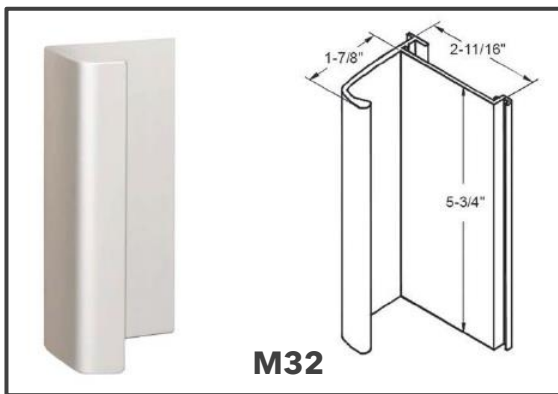
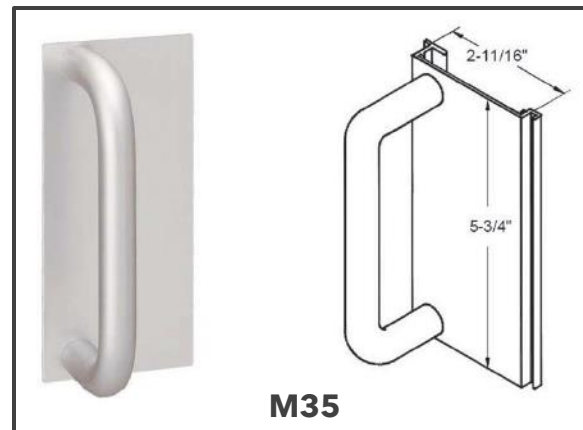
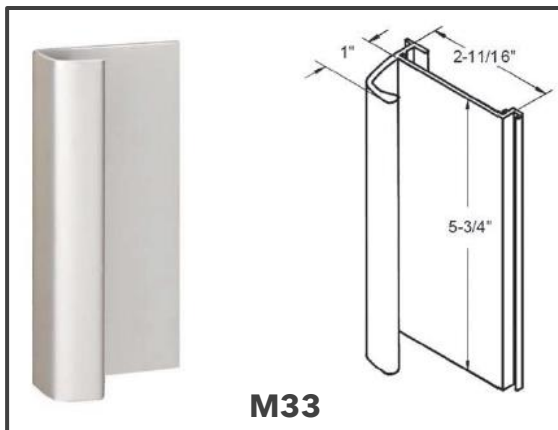
HARDWARE PUSH / PULL TRIM

Electric Functions Available:

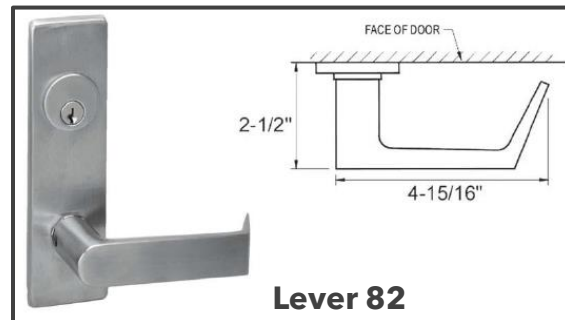
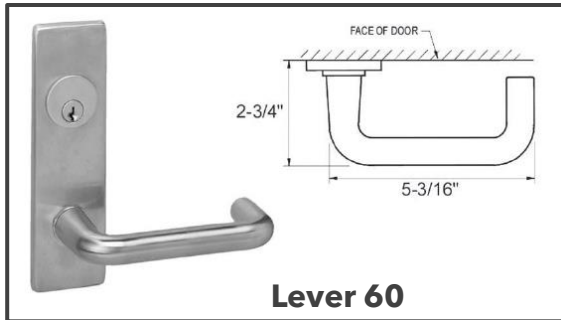
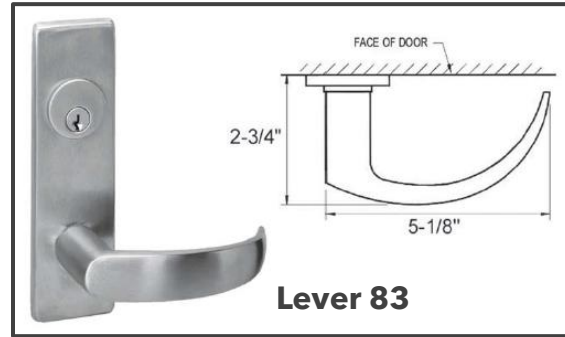
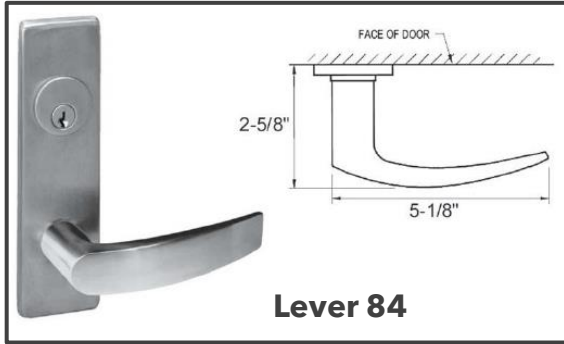
- Electrical Unlatching Only

Available Finishes:

- 628 - Satin Anodized
- 710 - Dark Bronze Anodized
- 28M - Mirror Anodized
- Black



HARDWARE LEVER TRIM



Electric Functions Available:

Electrical Unlatching

Fail Safe

Fail Secure

Available Finishes:

- 605 Bright Brass
- 606 Satin Brass
- 629 Bright Stainless Steel
- 630 Satin Stainless Steel
- 710 Dark Bronze
- Black

HARDWARE

FLUSH EXIT DEVICE

- 4-3/8" height, 24" width
- 1/8" projection in open position
 - smallest in industry
- 5/8" projection in closed position
- Insert may match door body
- 1'7" minimum leaf width



Door Closed



Door Open

PF 200 Flush Exit Device

HARDWARE

STANDARD SURFACE EXIT DEVICE

SMALL PUSH PAD

Standard Panic

- Surface mounted with 1-5/16" projection which allows for a 32" clear width in a 36" opening
- 24" standard width
- 6-11/16" Push Pad version (non-panic application)
- Dogging options - barrel key, hex key
- Insert may match door body
- Push side lever or grip can be field retrofit with standard panic



P14 / P14STP Exit Device



SP14 Push Pad



DOOR FUNCTIONS

- Passage 01
- Egress 1.5
- Privacy 02
- Entry (Apartment or Office Suite) 04
- Classroom 05
- Storeroom 07
- Apartment 09
- Dormitory 13
- Store Door 14
- Deadlock 17, 18

ELECTRICAL FUNCTIONS

Electrical Unlatching (E-UNL) - Power to the solenoid unlatches the door as long as the power is on. Power off allows the door to revert to its previous mode.

Used on doors with auto operator (typical).
No need to use trim for entry or exit.

Ex: keypad, card reader, or wheelchair access push pad.

Electric Fail Secure (E-SEC) - Power interruption, intentional or accidental, puts the mechanism into a locked mode.

Power out, door remains locked securing area. Used to keep exterior doors locked from outside entry due to power outage/fire.

Electric Fail Safe (E-SAF) - Power interruption, intentional or accidental, puts the mechanism into an unlocked mode.

Power out/ fire alarm, door unlocks for entry/exit.
Not typically used on exterior exit.

Electric Panic (E-PAN)- Interruption of power unlocks the panic.

Door always locked with power on. Power off/fire alarm, door is unlocked. Ideal for nursing homes.

ELECTRICAL PREP

- 1" hole for wire transfer

TECHNICAL DATA SHEET # 19R
FRAME PREP FOR CONCEALED LOOP

16"

EQ EQ

Ø1.000

HINGE RABBET

LEFT REVERSE (L.R.) OR RIGHT HAND (R.) HINGE JAMB SHOWN ABOVE

**HINGE JAMB HEAD DETAIL – PAIR OR SINGLE
FOR ELECTRIC DOOR WITH CONCEALED LOOP**

Total Door SYSTEMS™
Global Leader in Integrated Access Technology™

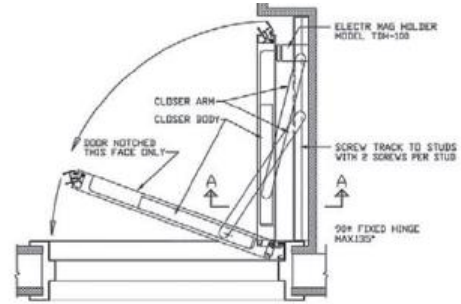
TEL (800) 852-6660
www.totaldoor.com
© Total Door 2019

FILE NAME
TDS19R
DATE 11/14/19

CONCEALED CLOSER



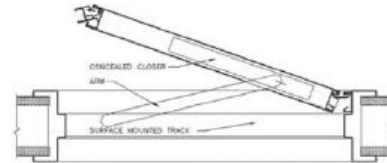
TDC 96P



TDC 96P Pocketed Application

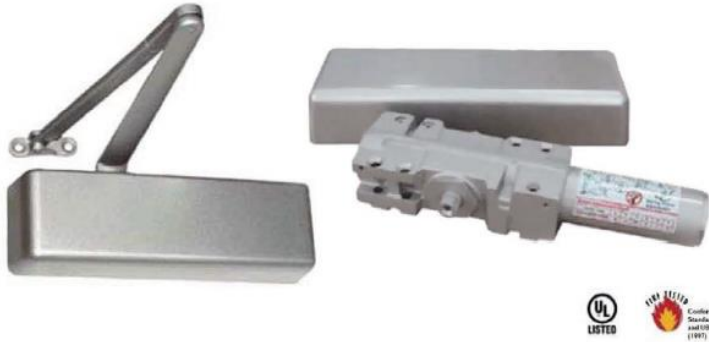


TDC 96



TDC 96 Standard Swing Application

SURFACE MOUNTED CLOSERS



TDC 5051



TDC 8907

DOOR MOUNTED MAGNETIC HOLD OPEN

- 1-3/8" diameter, 1/8" projection and mortised in the door
- Pre-wired to eliminate outlet box and electrician coordination
- 40lb. holding force
- 1/2" - 5 1/2" armature lengths



TDH 100

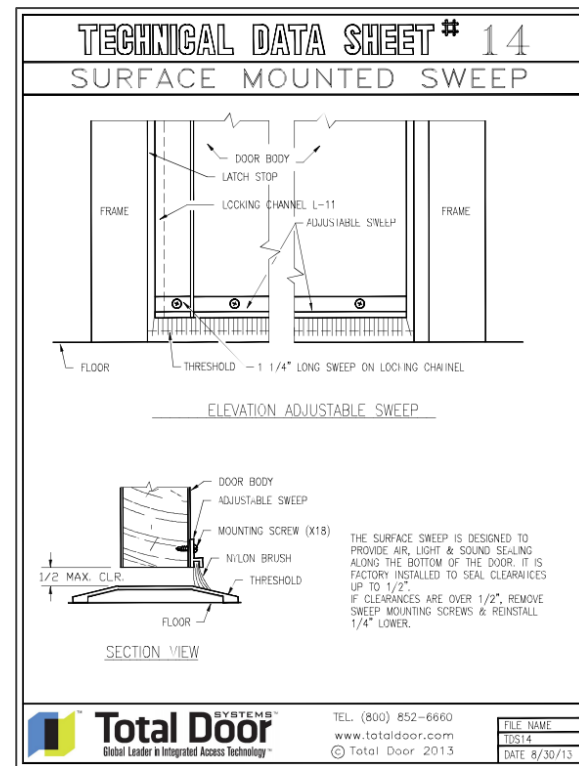
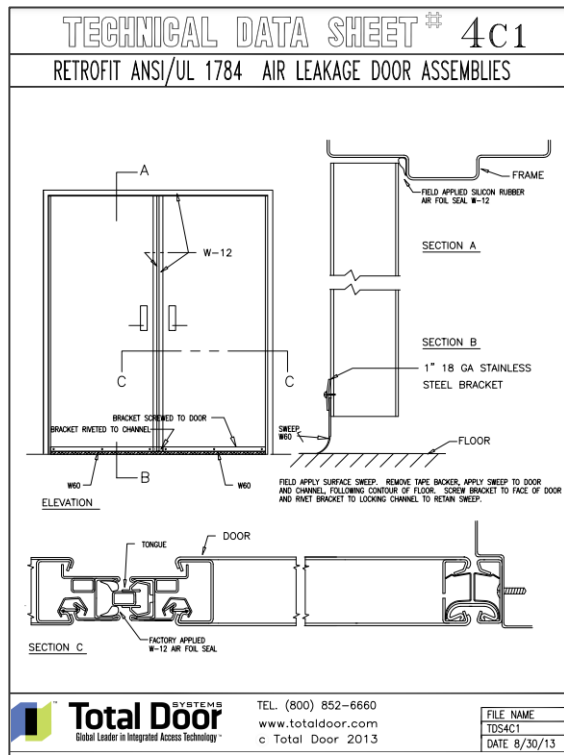
WALL MOUNTED MAGNETIC HOLD OPEN

- Door mounted catch plate
- Wall or floor mounted mag
- 35 lb. holding force
- Extensions available



TDH 200

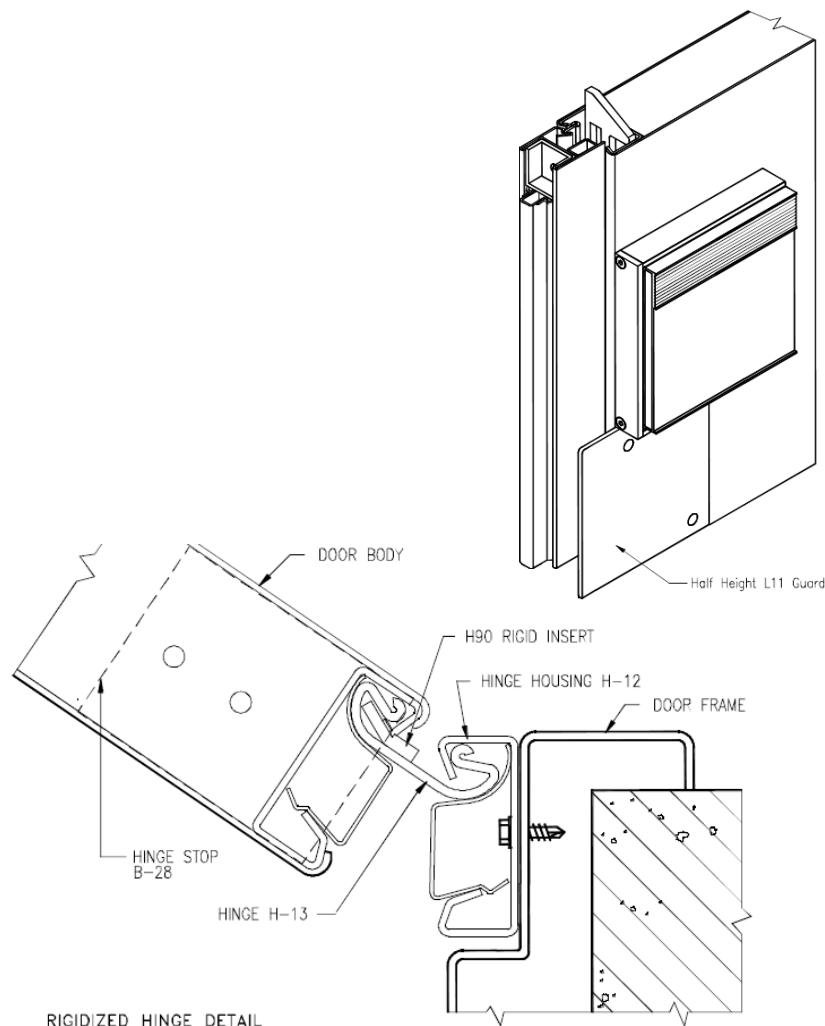
SMOKE SEALS / SWEEPS



EXTRA ITEMS AVAILABLE

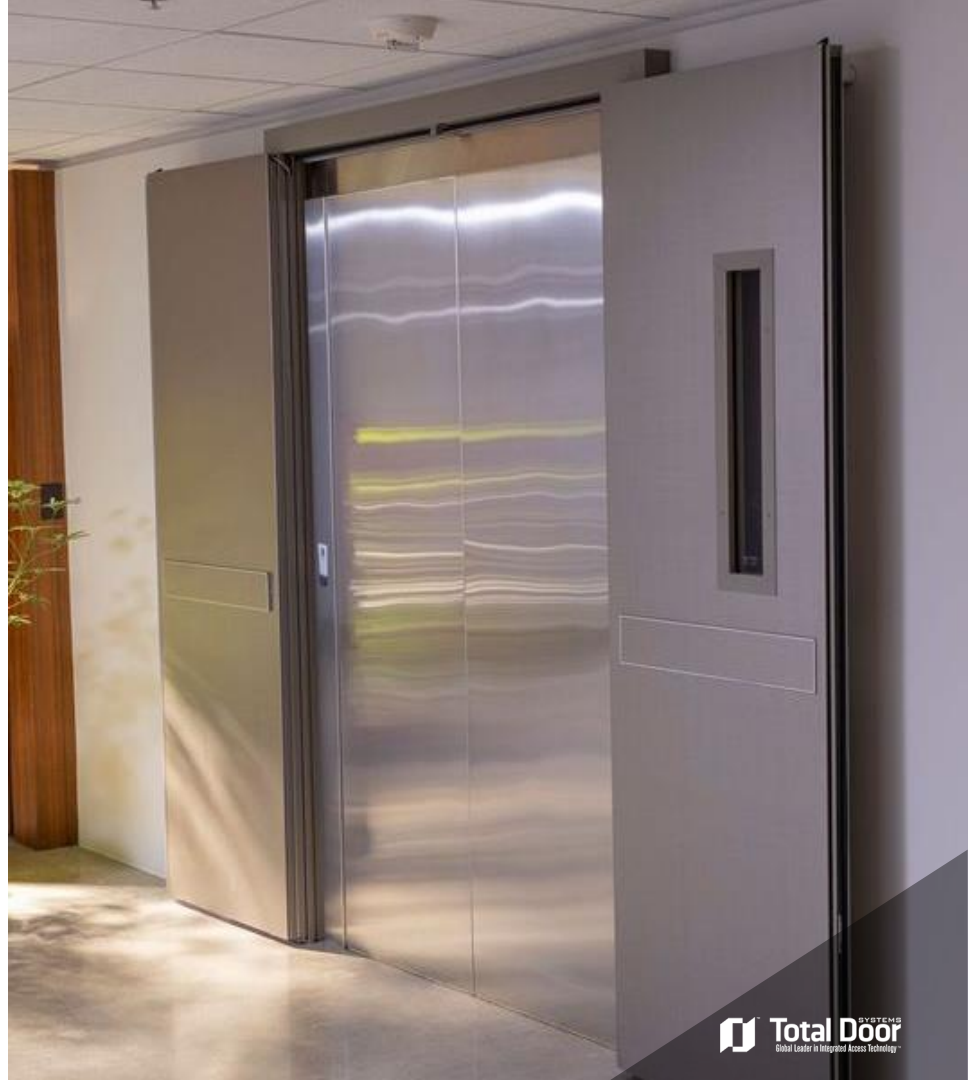
Extra Add-ons

- 90 Degree Rigidized Hinge
- Hinge Filler Plate Kit
- ASA Strike Filler Plate
- Key Unlatching
- L55 Steel Overhead Stop
- REX Switch
- Reinforced Locking Channel Clip
- Panic Edge Protector
- Reinforcements
 - Extra Bottom Rail
 - Extra Middle Rail
 - Extra Top Rail
- Removable mullions
- Hospital Edge Guard
- Locking Channel Guard
- Lead Lined

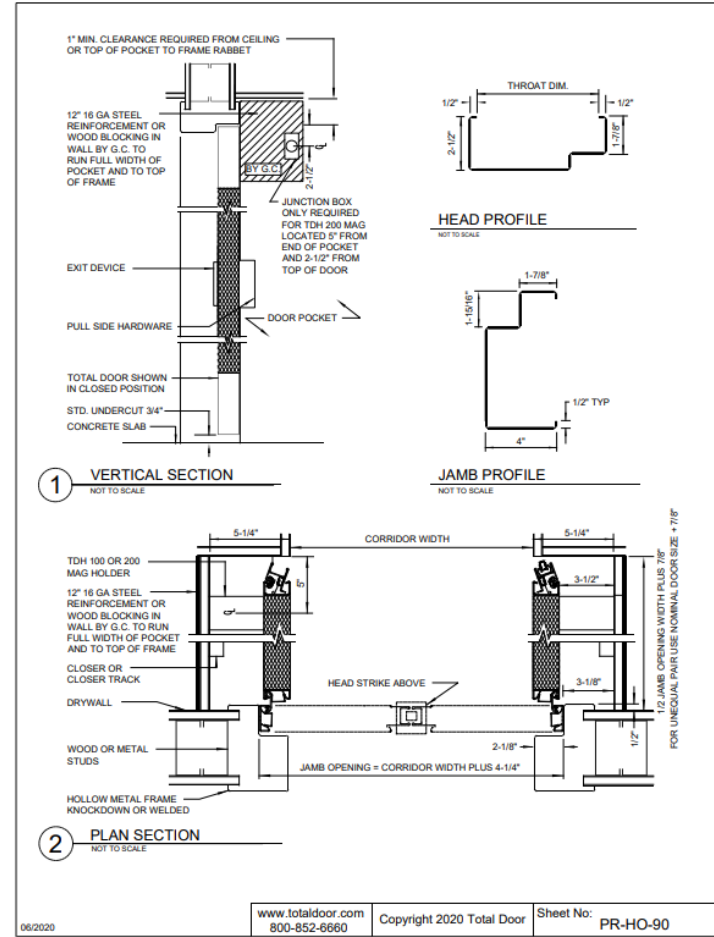
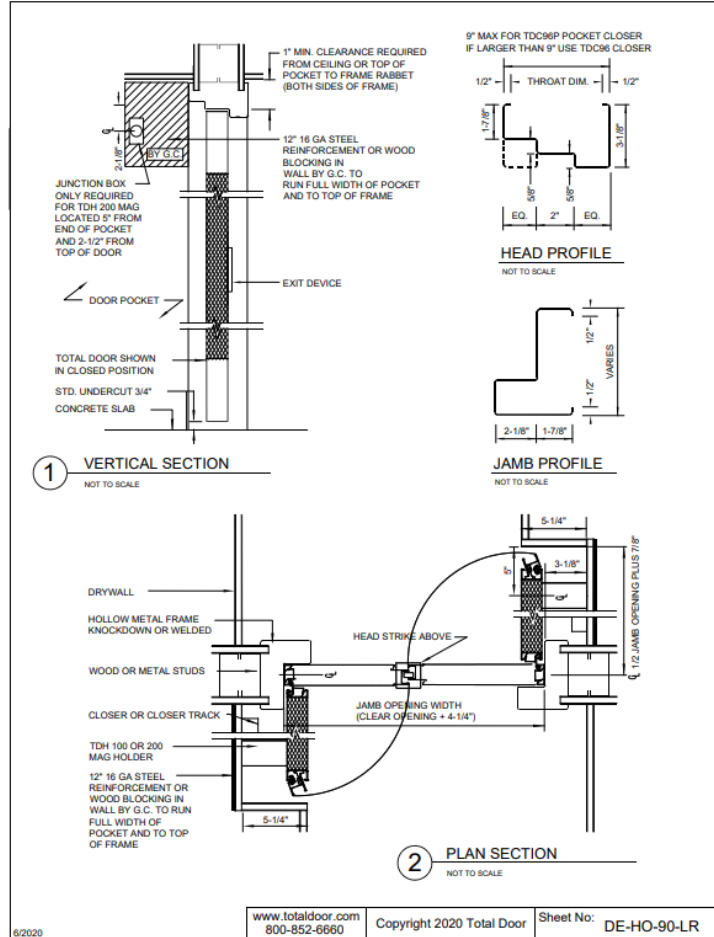


SAFEFRAME™ BY TOTAL DOOR

- Surface mounted
- No pocket necessary
- Multiple trades not involved
- Factory finished
- 2 dimensions for ordering
- Door and frame all in one delivery



FRAMES BY OTHERS



WHAT WE HAVE / DO NOT HAVE



- **REX (request to exit switch)**
- **Mag hold opens**
- **Sweeps and seals**
- **Electric inside the door body**
- **Removable mullions**



- **Automatic door operators**
- **Automatic door bottoms**
- **Mag locks**
- **Astragals**
- **Coordinators**
- **Floor closers**
- **Flush bolts**

WARRANTY

TDS limited warranty covers the materials and workmanship of its products manufactured after March 1, 2017 for five (5) years from the ship date for interior applications and two (2) years from the ship date for exterior applications.

Please refer to the warranty page on the website for complete details.

[TDS Warranty](#)



TARGET MARKETS
WHERE TO SPECIFY
APPLICATIONS



HEALTHCARE



HOSPITALITY



GOVERNMENT



MARKETS

HIGH RISE / MULTIFAMILY



MARKETS

SCHOOLS & UNIVERSITIES



MUSEUM



MARKETS



 **Total Door** SYSTEMS
Global Leader in Integrated Access Technology™

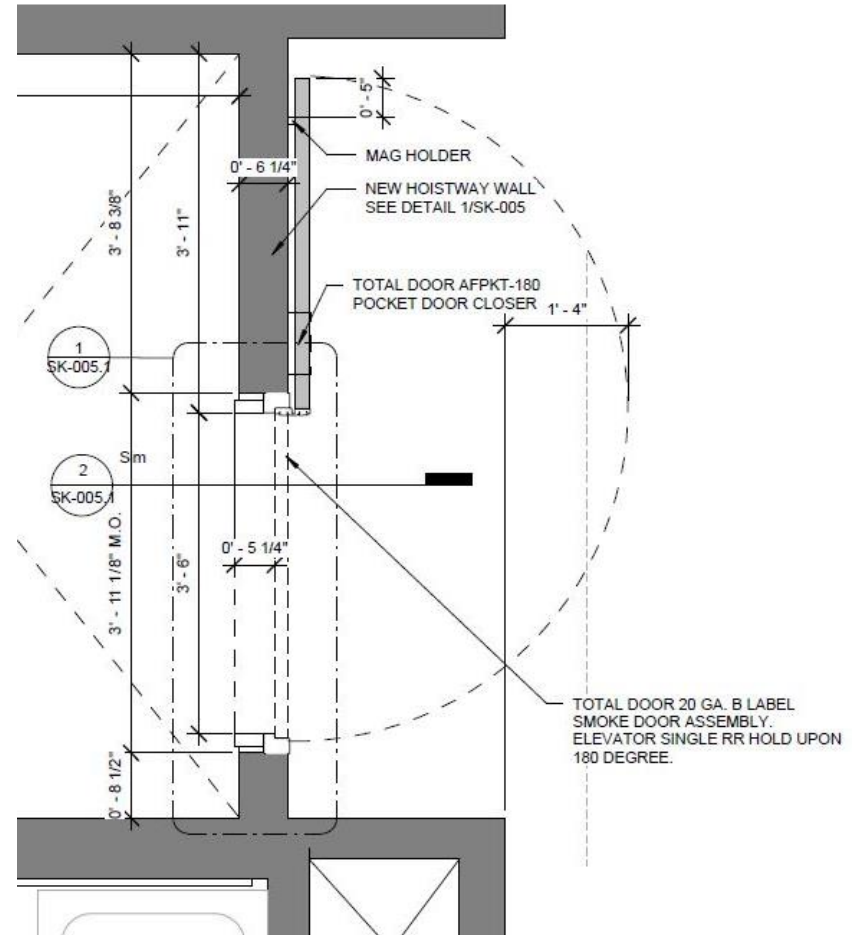
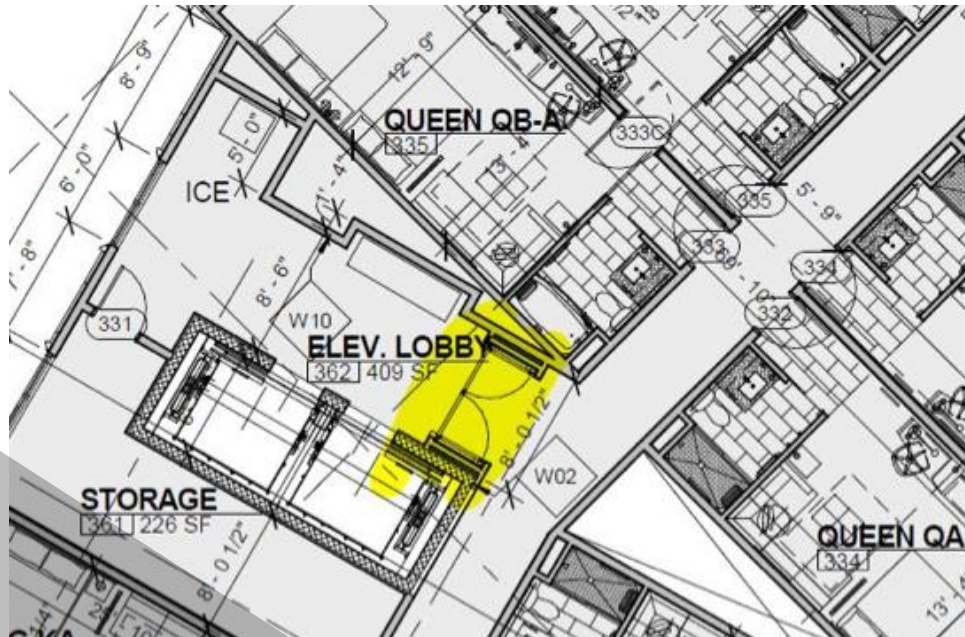
ELEVATOR LOBBY / ELEVATOR SHAFT - HOLD OPEN



**WHERE TO
SPECIFY**

WHERE TO SPECIFY

Elevator Lobby / Elevator Shaft - Hold Open



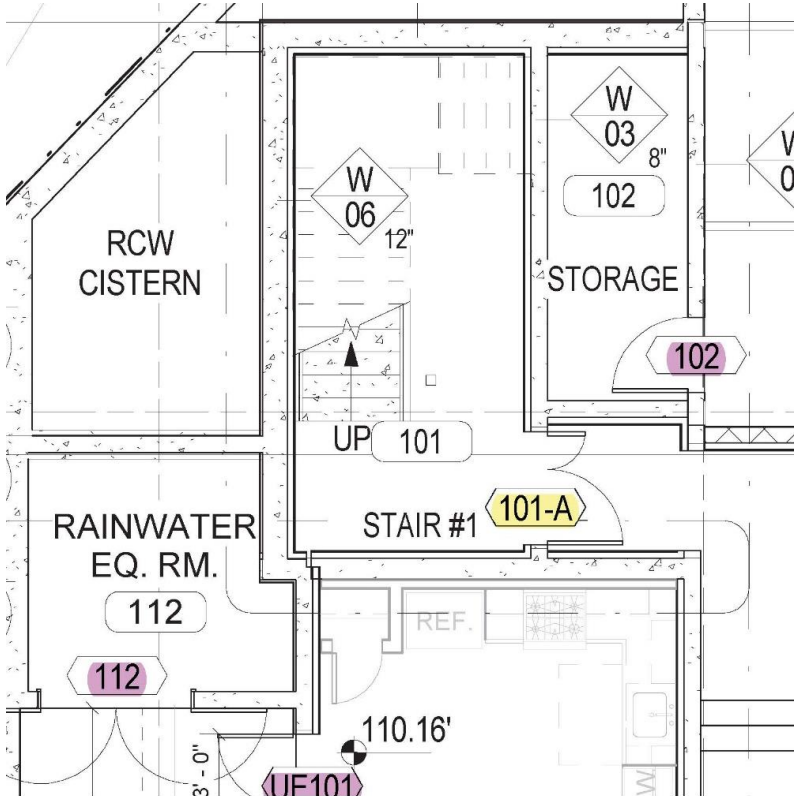
WHERE TO SPECIFY

Stairwells



WHERE TO SPECIFY

Stairwells

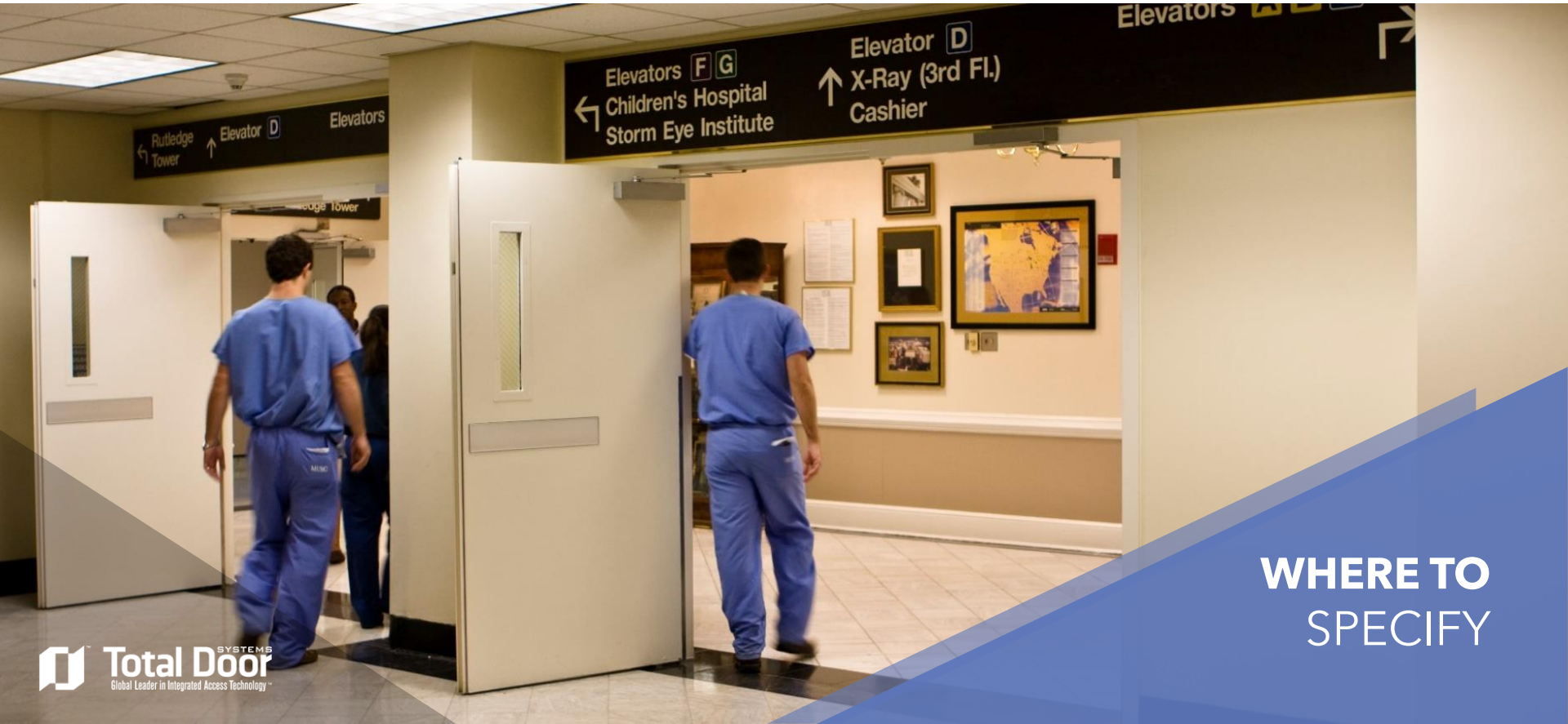


PAIR CROSS-CORRIDOR - HOLD OPEN



**WHERE TO
SPECIFY**

DOUBLE EGRESS CROSS-CORRIDOR - HOLD OPEN



HOW TO QUOTE TOTAL DOOR



- Start with the construction plan
- Identify Total Door applications
 - Elevator Lobbies
 - Elevator Shafts
 - Cross Corridor
 - Stairwells
- Highlight the applications on the construction plan
- Find the openings on the door schedule to identify rating, size, finish, etc...
- Review Hardware schedule if there is one to verify function
- Review finish schedule to identify exact finish requirements

HOW TO QUOTE
TOTAL DOOR

REVIEWING THE CONSTRUCTION PLAN FOR OPENING TYPES

- Double Egress
- Elevator Cab
- Same Swing Pair
- Stairwell

WHAT TO DO WITH THIS INFORMATION

- Turn it into a quote
 - Door Schedule
 - Hardware Schedule
 - Specifications
 - Floor Plans - Identify the openings
- Any Updates?
 - Send the quote update request to orders@totaldoor.com
- Communication
 - Always reference the project name when emailing
 - Use the same thread as previously used
 - Cc ALL persons involved

GIVING THE QUOTE TO THE END USER

- Give submittal documents to the end user
 - You are quoting installation and doors - Installation MUST be included
- Suggested Paperwork to Include
 - The quote
 - Installation price
 - Cut sheets
 - Elevation drawings
 - Detail PDFs
 - Certificate of Compliance
 - UL EPD
 - Technical data sheets

PLACING AN ORDER

- Identify the Certified Installer
- Reviewing the Quote
 - Review the Breakdown Report
- Any Changes that Need to be Made?
 - Breakdown Report drives the order & production, not the PO or other documents & communication
 - Changes must be made on the quote document
 - Size
 - Undercut
 - Rating
 - Handing
 - Finish
 - Hardware
- Approvals
 - Stain/Paint
 - 3rd Party Supplied Materials (Veneer, Metal, etc.)
 - Must be received & inspected

Total Door Quote



Distributor:	Doors Done Right	Project Name:	Inland Valley Med Center
Distributor Contact:	Kevin Smith	Project Address:	36485 Inland Valley Drive
Distributor Email:	ks@ddr.com	Project City:	Wildomar
Architect:	HOK	Project State/Zip:	CA 92559

Breakdown Report

Quote Name: Inland Valley Med Center

Line No: 1 - C2846
Inland Valley Med Center - DE

Application:	Interior
Configuration:	Double Egress 18 Gauge
Fire Label:	Non-Labeled
Opening:	8' x 7'
Undercut:	3/4"
Gasketing:	Black
Sweep:	Mortised Sweep
Mechanism Height:	Standard Height -39 9/16"
Hinge & Locking Channel Color:	Custom Color TBD

Leaf 1	Leaf 2
Size: 4' x 7'	Size: 4' x 7'
Handing: Left Hand Reverse	Handing: Right Hand
Function: Lever X Panic Passage, Either Side	Function: Lever X Panic Passage, Either Side
Electric: Electric Unlatching	Electric: Electric Unlatching
Closer Type: NA 0-90 Degrees	Closer Type: NA 0-90 Degrees
Mag Holder: TDH100	Mag Holder: TDH100
Armature Type: Type 4 - Pocket Depth 4 1/8" to 4 9/16"	Armature Type: Type 4 - Pocket Depth 4 1/8" to 4 9/16"
Push Skin Finish: Prime	Push Skin Finish: Prime
Push Type: Standard Panic	Push Type: Standard Panic
Push Finish: 629 - Satin Aluminum Anodized	Push Finish: 629 - Satin Aluminum Anodized
Panic Insert: Prime	Panic Insert: Prime
Kick Plate/Finish: None None	Kick Plate/Finish: None None
Pull Type: Blank Escutcheon	Pull Type: Blank Escutcheon
Pull Trim Finish: 630 - Satin Stainless Steel	Pull Trim Finish: 630 - Satin Stainless Steel
Mop Plate/Finish: None None	Mop Plate/Finish: None None
Elevation/Glass Type: Flush None	Elevation/Glass Type: Flush None

Door Numbers: C4206

PLACING AN ORDER

- Orders@totaldoor.com
 - Purchase Order - 1 per order
 - Approved Quote
- Order Acknowledgment
- Production Scheduling
 - Based on the quote, NOT the PO

Total Door Order



Distributor:	Doors Done Right	Project Name:	950 El Camino Real
Distributor Contact:	Kevin Smith	Project Address:	950 El Camino Real
Distributor Email:	ks@ddr.com	Project City:	Mountain View
Installer:	John Smith	Project State/Zip:	CA 94577
Terms:	Net 30	Scheduled Ship Date:	09/10/2021
PO Number:	ddr-192837		

Bill to: Accounts Payable
2450 Santa Monica Blvd
West Hollywood, CA 90046

Ship to: Doors Done Right
2450 Santa Monica Blvd
West Hollywood, CA 90046

7/13/2021

Attached is your order. Freight, frames and installation are not included.

It's the responsibility of the distributor of record to provide certified installation. If you need help finding certified installers, contact the factory for the sales representative of the project location.

This order is now finalized and will be manufactured according to the information provided in the enclosed order document. Please review carefully and advise immediately of any discrepancies. Total Door is not responsible for any errors or omissions after this order is in production.

All products ordered shall be shipped F.O.B. Waterford, Michigan in accordance with TOTAL DOOR® shipping and freight policies as amended from time to time. Distributor shall be responsible for making any claims against any common carrier for damage, loss or delay.

This will acknowledge your order which has been accepted and entered as a firm sale as shown hereon. It is understood and agreed that the order will be filed subject to "CONDITIONS OF SALE". No amplification or modification of our "CONDITIONS OF SALE" will be recognized by us unless expressly agreed to by us in writing.